



RISK MANAGEMENT

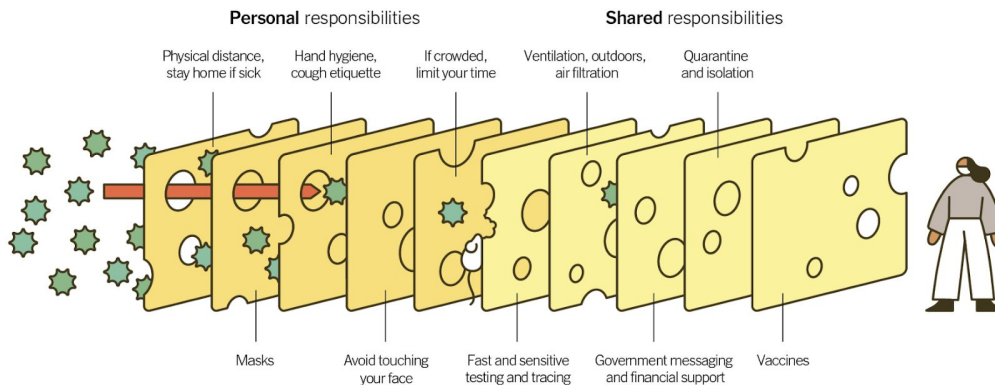
COVID-19 is an airborne disease that requires a multi-layered risk management strategy.

The philosophy is simple: multiple strategies combined are much more effective than doing just one or two things and hoping for the best.

Public health experts describe this as a “Swiss Cheese” strategy to fight the virus.

Multiple Layers Improve Success

The Swiss Cheese Respiratory Pandemic Defense recognizes that no single intervention is perfect at preventing the spread of the coronavirus. Each intervention (layer) has holes.



Source: Adapted from Ian M. Mackay (virologydownunder.com) and James T. Reason. Illustration by Rose Wong.

NIOSH recommends multi-layered strategies to reduce exposures to hazards.

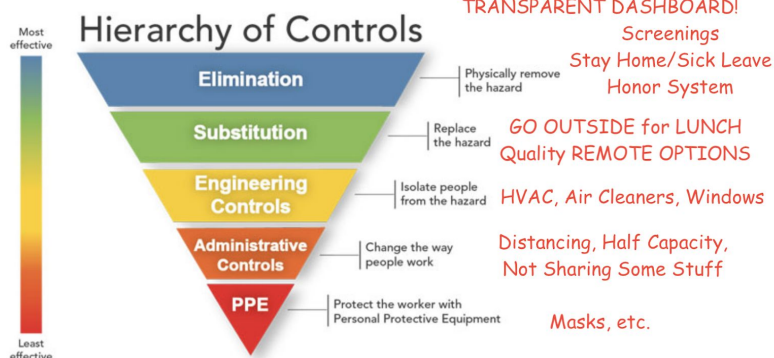


HIERARCHY OF CONTROLS

Overview

Controlling exposures to occupational hazards is the fundamental method of protecting workers. Traditionally, a hierarchy of controls has been used as a means of determining how to implement feasible and effective control solutions.

One representation of this hierarchy is as follows: **TESTING! Quarantines for exposures.**



We added notes (in red) to show how “return to school buildings” policies can follow the hierarchy of controls, from MOST EFFECTIVE strategies to LEAST EFFECTIVE.